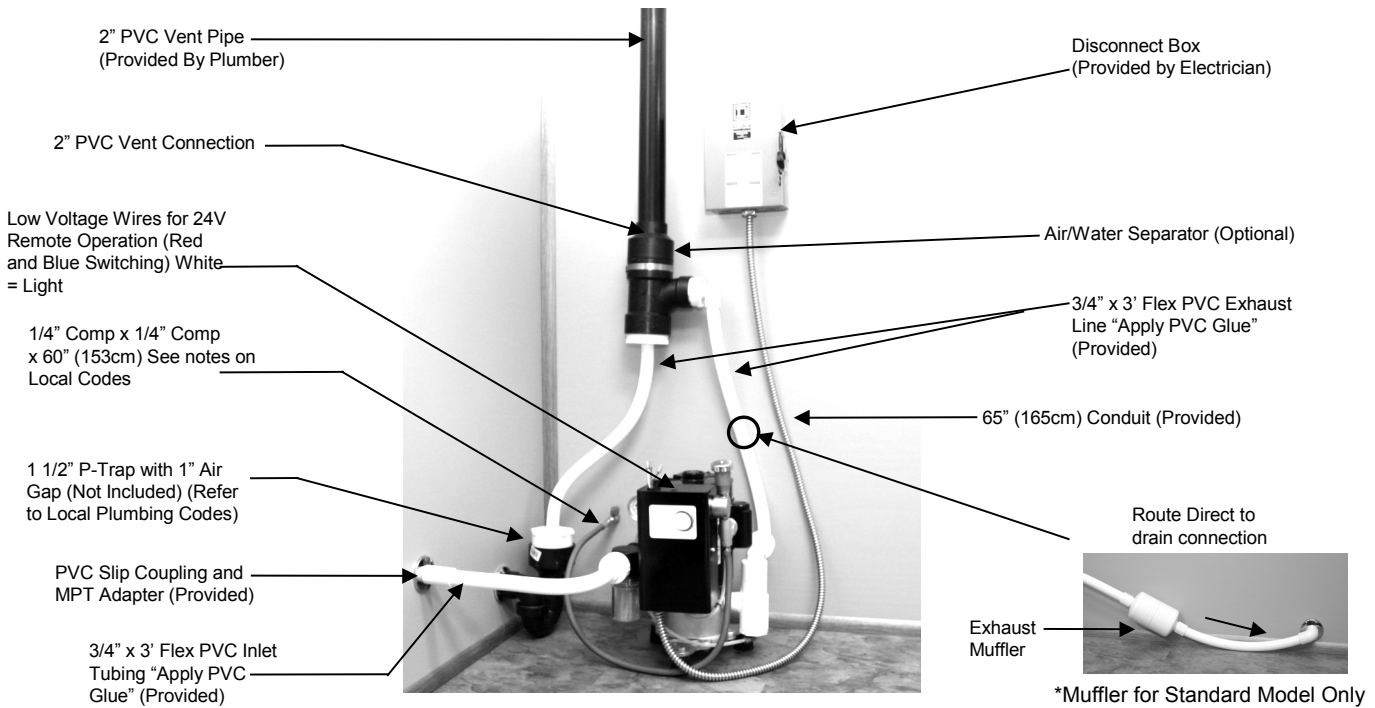




Installation & Operation



Description:

The Vortex by JDS Vacuum Systems have been tested and approved by various regulatory test agencies. The following list provides JDS File Numbers to help with questions that might arise regarding installation inspections.

ETL Listed under UL Standard for Medical Electrical Equipment.....ETL#3124832

Conforms to UL 60601-1 and Certified to CSA/CAN C22.2#601.1

This dental vacuum should only be installed by qualified personnel. Should any questions arise, call JDS Technical Support between hours of 8:30 a.m. to 5:00 p.m. (Pacific Standard Time).

Unpacking The System:

Place the Vacuum System in a dry, clean, well ventilated area, on a solid, level surface. Consider sound level and insulate as needed. Be sure adequate ventilation is available as the Vacuum System is air cooled. Ambient temperature in the equipment room should be within the temperature range of 40 degrees Fahrenheit (4° C) minimum and to 100 degrees Fahrenheit (38° C) maximum.

During the cold weather months, ice may form inside the pump from the residual water after factory performance testing. **Allow ice to melt before starting the vacuum to avoid damaging the pump.**

To ensure that the pump is free from ice:

- Remove motor shaft access cap • Turn motor using wrench • Shaft should run free when all of the ice has melted

1. Remove the cardboard from the shipping platform.
2. Check to be sure that the pump is not damaged and that the Pump Installation Kit is in the box.
3. Remove pump from the shipping platform.
4. Install rubber feet onto the bottom of the pump.

JDS Dental Products • 21205 Norwalk Blvd • Hawaiian Gardens, CA 90716

Technical Support: (562) 924 – 4300 • Fax: (562) 924-2273 • Email: support@jdsfmfg.com • Web: www.jdsfmfg.com



Installation & Operation Single Vacuum System

JDS Vacuum Pump Specifications:

Model	Max Users	Height	Width	Depth	Ship Weight	Total HP	Volt	Amp (Per Pump)	Hertz	Wire GA	Breaker Size
JVBS10	2	16 in.	12 in.	12 in.	58 lbs.	1	115/208-230	16/8	60	12/14	30/20
JVBS10R	2	16 in.	12 in.	12 in.	60 lbs.	1	115/208-230	16/8	60	12/14	30/20
JVBS10S	2	16 in.	12 in.	12 in.	60 lbs.	1	115/208-230	16/8	60	12/14	30/20
JVBS10RS	2	16 in.	12 in.	12 in.	65 lbs.	1	115/208-230	16/8	60	12/14	30/20
JVBS15	3	17 in.	12 in.	12 in.	62 lbs.	1.5	115/208-230	22/11	60	10/12	40/20
JVBS15R	3	17 in.	12 in.	12 in.	64 lbs.	1.5	115/208-230	22/11	60	10/12	40/20
JVBS15S	3	17 in.	12 in.	12 in.	64 lbs.	1.5	115/208-230	22/11	60	10/12	40/20
JVBS15RS	3	17 in.	12 in.	12 in.	66 lbs.	1.5	115/208-230	22/11	60	10/12	40/20
JVBS20	4	19 in.	12 in.	12in.	75 lbs.	2	208-230	13.4	60	10/12	20
JVBS20R	4	19 in.	12 in.	12in.	75 lbs.	2	208-230	13.4	60	10/12	20
JVBS20S	4	19 in.	12 in.	12in.	75 lbs.	2	208-230	13.4	60	10/12	20
JVBS20RS	4	19 in.	12 in.	12in.	75 lbs.	2	208-230	13.4	60	10/12	20

Models suffixed with “R” denotes Recycler

Models suffixed with “S” denotes Air/water Separator

Example: Vacuum model **JVBS10** with a Recycler and Separator is written as **JVBS10RS**

Options: Most models can be ordered with a recycler, separator, or both by simply adding suffix(es) “R” and “S”. Recycler models consume .19 GPM of water.

Notes: A consigned electrical circuit with circuit breaker must be provided for each pump. Ambient temperature must be within the range of 40 degrees Fahrenheit (4° C) minimum to 100 degrees Fahrenheit (38° C) maximum.

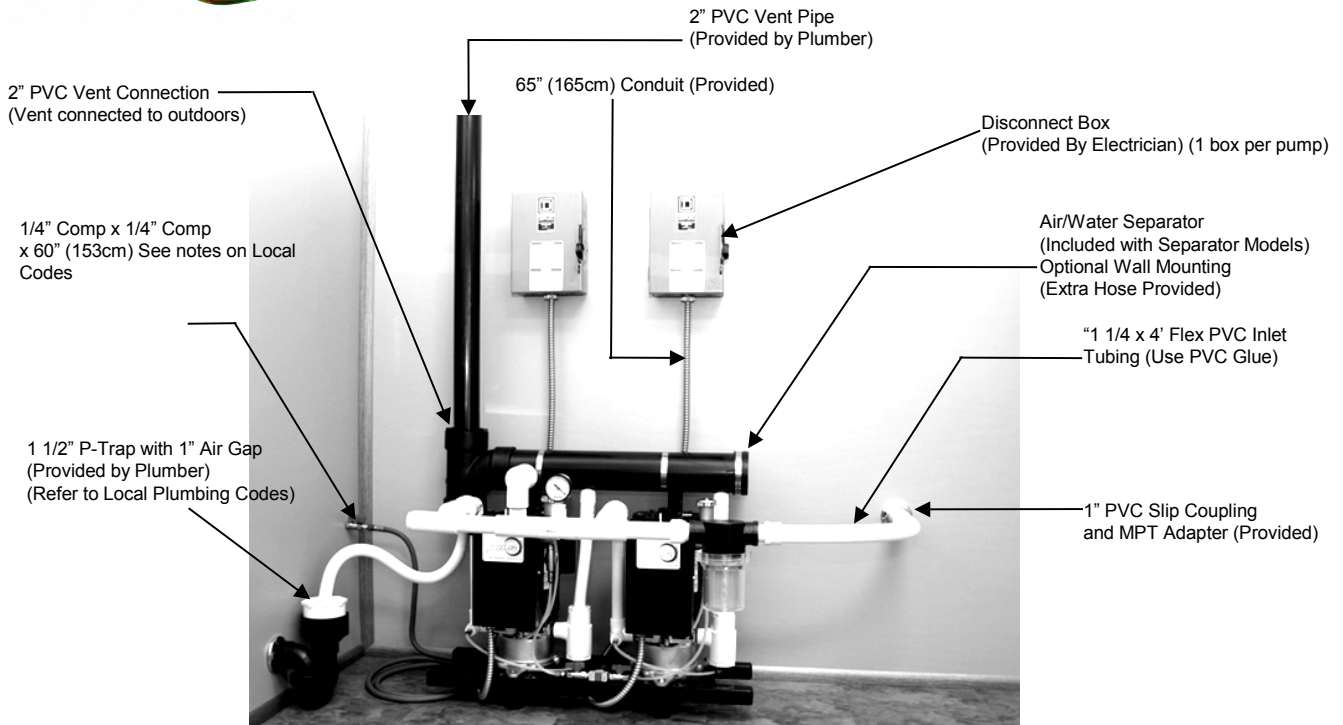


3124832



Installation & Operation

Twin Vacuum System



Description:

The Vortex by JDS Vacuum Systems have been tested and approved by various regulatory test agencies. The following list provides JDS File Numbers to help with questions that might arise regarding installation inspections.

ETL Listed under UL Standard for Medical Electrical Equipment.....ETL#3124832

Conforms to UL 60601-1 and Certified to CSA/CAN C22.2#601.1

This dental vacuum should only be installed by qualified personnel. Should any questions arise, call JDS Technical Support between hours of 8:30 a.m. to 5:00 p.m. (Pacific Standard Time).

Unpacking The System:

Place the Vacuum System in a dry, clean, well ventilated area, on a solid, level surface. Consider sound level and insulate as needed. Be sure adequate ventilation is available as the Vacuum System is air cooled. Ambient temperature in the equipment room should be within the temperature range of 40 degrees Fahrenheit (4° C) minimum and to 100 degrees Fahrenheit (38° C) maximum.

During the cold weather months, ice may form inside the pump from the residual water after factory performance testing. **Allow ice to melt before starting the vacuum to avoid damaging the pump.**

•Remove motor shaft access cap • Turn motor using wrench • Shaft should run free when all of the ice has melted

1. Remove the cardboard from the shipping platform.
2. Check to be sure that the pump is not damaged and that the Pump Installation Kit is in the box.
3. Remove pump from the shipping platform.
4. Install rubber feet onto the bottom of the pump.

JDS • 21205 Norwalk Blvd • Hawaiian Gardens, CA 90716

Technical Support: (888) 802 – 4JDS • Fax: (562) 924-2273 • Email: support@jdsfmfg.com • Web: www.jdsfmfg.com



Installation & Operation Twin Vacuum System

JDS Vacuum Pump Specifications:

Model	Max Users	Height	Width	Depth	Ship Weight	Total HP	Volt	Amp	Hertz	Wire GA	Breaker Size
JVBTW20S	4	23 in.	28 in.	17 in.	132 lbs.	2	115/208-230	2 x 8	60	12/14	2@20
JVBTW20RS	4	23 in.	28 in.	17 in.	135 lbs.	2	115/208-230	2 x 8	60	12/14	2@20
JVBTW30S	6	26 in.	28 in.	17 in.	150 lbs.	3	115/208-230	2 x 11	60	12/14	2@20
JVBTW30RS	6	26 in.	28 in.	17 in.	154 lbs.	3	115/208-230	2 x 11	60	12/14	2@20
JVBTW40S	8	30 in.	28 in.	17 in.	160 lbs.	4	208-230	2 x 13.4	60	10/12	2@20
JVBTW40RS	8	30 in.	28 in.	17 in.	165 lbs.	4	208-230	2 x 13.4	60	10/12	2@20

Models suffixed with “R” denotes Recycler

Models suffixed with “S” denotes Air/water Separator

Example: Vacuum model **JVBTW20R** with a Recycler

Vacuum model **JVBTW20RS** with a recycler and separator

Options: Most models can be ordered with a recycler, separator, or both by simply adding suffix(es) “R” and “S”. Recycler models consume .19 GPM of water.

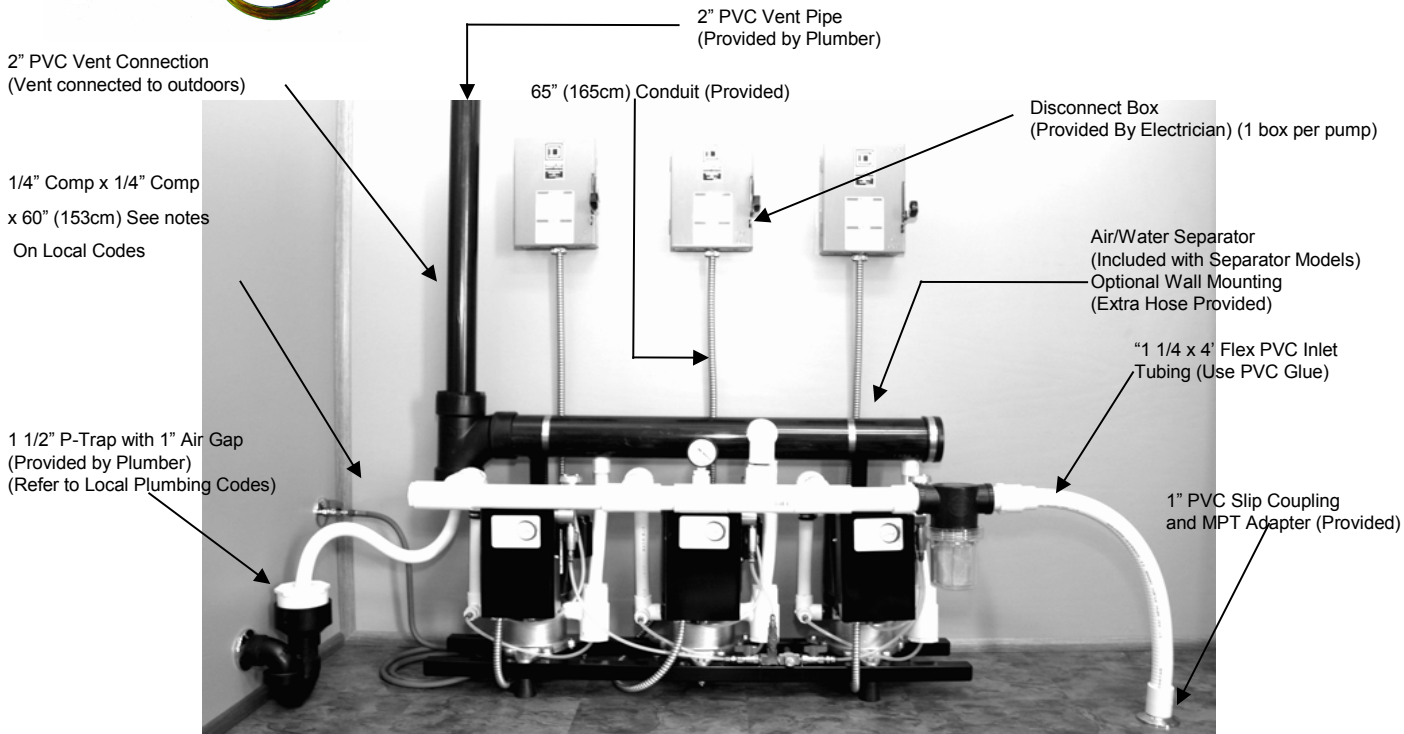
Notes: A consigned electrical circuit with circuit breaker must be provided for each pump. Ambient temperature must be within the range of 40 degrees Fahrenheit (4° C) minimum to 100 degrees Fahrenheit (38° C) maximum.





Installation & Operation

Triple Vacuum System



Description:

The Vortex by JDS Vacuum Systems have been tested and approved by various regulatory test agencies. The following list provides JDS File Numbers to help with questions that might arise regarding installation inspections.

ETL listed under UL Standard for Medical Electrical Equipment.....ETL#3124832

Conforms to UL 60601-1 and Certified to CAN/CSA C22.2#601.1

This dental vacuum should only be installed by qualified personnel. Should any questions arise, call JDS Technical Support between hours of 8:30 a.m. to 5:00 p.m. (Pacific Standard Time).

Unpacking The System:

Place the Vacuum System in a dry, clean, well ventilated area, on a solid, level surface. Consider sound level and insulate as needed. Be sure adequate ventilation is available as the Vacuum System is air cooled. Ambient temperature in the equipment room should be within the temperature range of 40 degrees Fahrenheit (4° C) minimum and to 100 degrees Fahrenheit (38° C) maximum.

During the cold weather months, ice may form inside the pump from the residual water after factory performance testing. **Allow ice to melt before starting the vacuum to avoid damaging the pump.**

•Remove motor shaft access cap • Turn motor using wrench • Shaft should run free when all of the ice has melted

1. Remove the cardboard from the shipping platform.
2. Check to be sure that the pump is not damaged and that the Pump Installation Kit is in the box.
3. Remove pump from the shipping platform.
4. Install rubber feet onto the bottom of the pump.

JDS • 21205 Norwalk Blvd. • Hawaiian Gardens, CA 90716

Technical Support: 562-924-4300 • Fax: 562-924-2273 • Email: support@jdsfmfg.com • Web: www.jdsfmfg.com



Installation & Operation Triple Vacuum System

JDS Vacuum Pump Specifications:

Model	Max Users	Height	Width	Depth	Ship Weight	Total HP	Volt	Amps	Hertz	Wire GA	Breaker Size
JVBTR30S	6	32 in.	45 in.	18 in.	190 lbs.	3	208-230	3 x 8	60	12/14	/3@20
JVBTR30RS	6	32 in.	45 in.	18 in.	193 lbs.	3	208-230	3 X 8	60	12/14	3@20
JVBTR45S	9	32 in.	45 in.	18 in.	203 lbs.	4.5	208-230	3 x 11	60	12/14	3@20
JVBTR45RS	9	32 in.	45 in.	18 in.	206 lbs.	4.5	208-230	3 x 11	60	12/14	3@20
JVBTR60S	12	32 in.	45 in.	18 in.	216 lbs.	6	208-230	3 x 13.4	60	10/12	3@20
JVBTR60RS	12	32 in.	45 in.	18 in.	219 lbs.	6	208-230	3 x 13.4	60	10/12	3@20

Models suffixed with “**R**” denotes Recycler

Models suffixed with “**S**”

denotes Air/water Separator

Example:

Vacuum model **JVBTR30R** with a Recycler

Vacuum model **JVBTR30RS** with a recycler and separator

Options: Most models can be ordered with a recycler, separator, or both by simply adding suffix(es) “**R**” and “**S**”. Recycler models consume .19 GPM of water.

Notes: A consigned electrical circuit with circuit breaker must be provided for each pump. Ambient temperature must be within the range of 40 degrees Fahrenheit (4° C) minimum to 100 degrees Fahrenheit (38° C) maximum.



3124832



Installation & Operation Vacuum System

IMPORTANT: JDS Dental Products Vacuum Systems are Class 1 Equipments and are to be installed according to local plumbing and electrical codes.

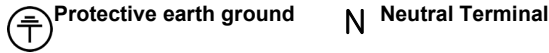
Do not operate the equipment without complete and proper grounding.

Fuse Replacement: Warning. For continued protection against risk of fire, replace the low voltage fuse with listed, Bussman® Type AGC-1 only.

Caution: Electrical shock hazard. Do not remove cover. Refer servicing to qualified personnel

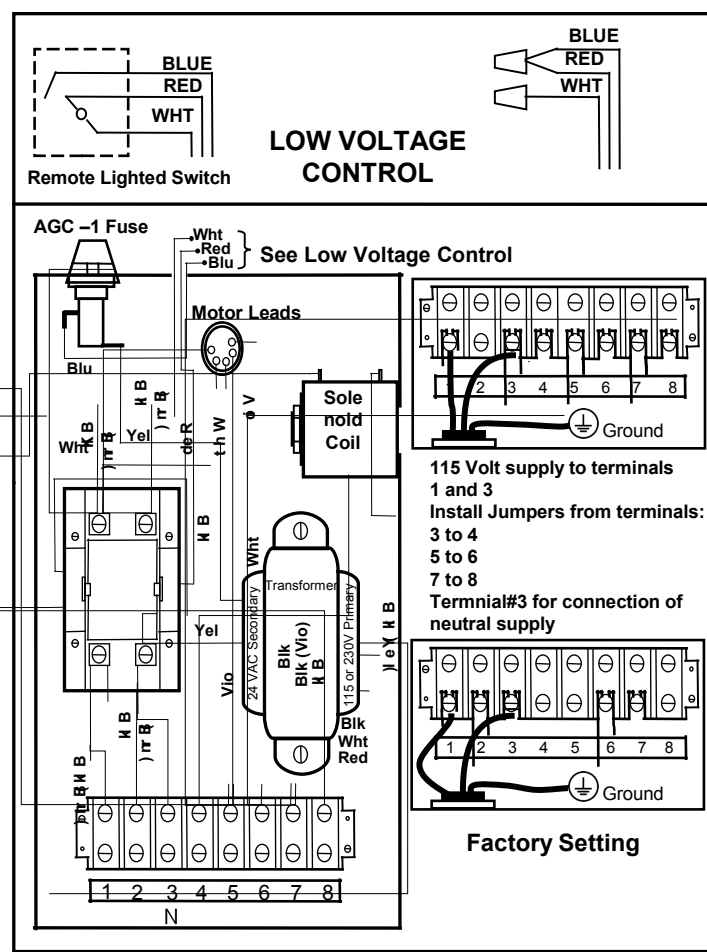
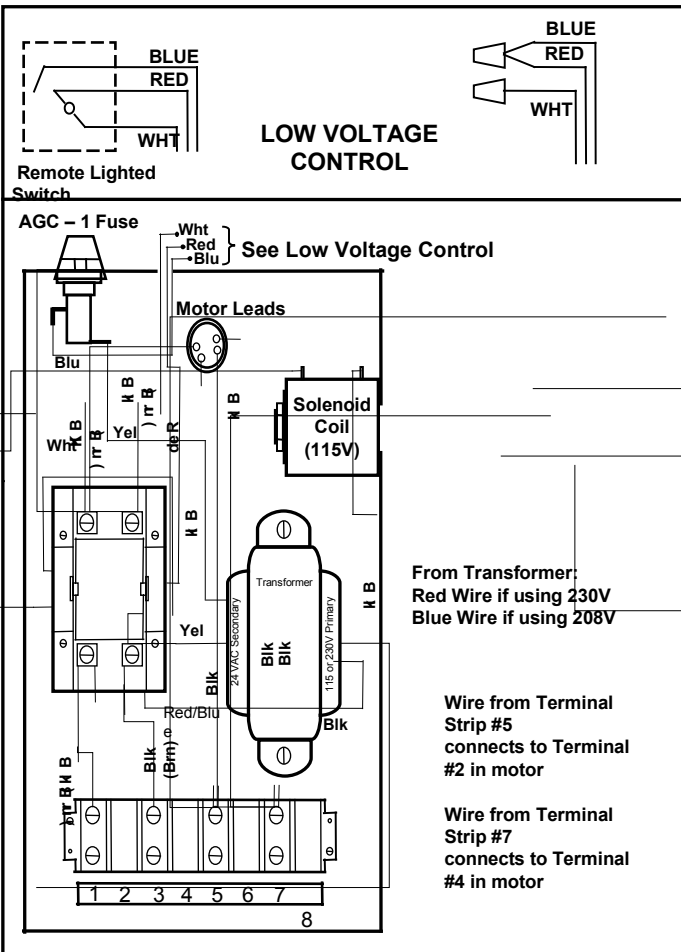
Caution: White wire on top of electric box is for 24V light only.

This Vacuum is designed and built to minimize electromagnetic interference with other devices. To mitigate disruptive electromagnetic interference, position and place this device away from other sources of electromagnetic energy.



208-230 Voltage Models

Dual Voltage Models



Electrical Rating

JVBS10 - V: 115/208-230	60Hz.	Max Amb: 40°C	Max Amps: 16.2/8.1	RPM: 3450	1.0HP	Single Phase
JVBS15 - V: 115/208-230	60Hz	Max Amb: 40°C	Max Amps: 22.0/11.0	RPM: 3450	1.5HP	Single Phase
JVBS20 - V: 208-230	60Hz	Max Amb: 40°C	Max Amps: 13.4	RPM: 3450	2.0HP	Single Phase



A. Plumbing Hook-Up Requirements:

Water Line (Recommended)

1/2 inch (13 mm) cold water supply line with shut off valve terminating in 1/2 inch FPT. **The line must be flushed out prior to connection to vacuum.**

IMPORTANT: Water is essential for the operation and longevity of the pump. There must be no interruptions or restrictions of the water supply during operation. Water containing high mineral content may cause mineral build-up and create water starvation, leading to seal failure. A filter and water softener are recommended for this situation.

Waste Line

Water and air exhaust to sewer line terminating in:

Option A – Floor sink, an exhaust separator is highly recommended for most installations.

Option B – P-trap adapted to 3/4 inch (19mm) PVC slip connection. A 1 inch (25mm) air gap may be required by local code.

Vacuum Line

3/4 inch (19mm) PVC female slip connection. Guidelines for the proper design of a vacuum piping system are given in the following sections.

IMPORTANT: Continuously running sinks or cuspidors must NEVER be connected to the vacuum piping system.

B. Electrical Hook-Up Requirements:

Low Voltage Line (24V)

18-3 Thermostat wire from remote control switch if low voltage remote control switching is desired. Red and Blue wires are for switching, the White wire is for a lighted switch.

Line Voltage (60Hz)

A single phase, 115 or 208-230 volt, 60Hz., supply circuit with approved ground connection is required. The 1 and 1 1/2 HP units are dual voltage 115/208-230 VAC. **All units are factory wired for 208-230 volt operation:** 220 volt operation is recommended for maximum efficiency. An electrical hook-up kit, complete with high voltage switching box, and pre-wired conduit is provided.

C. Vacuum Piping System Guidelines:

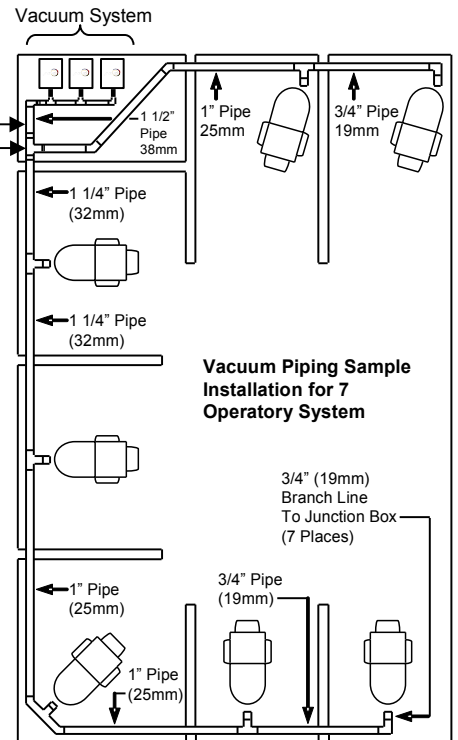
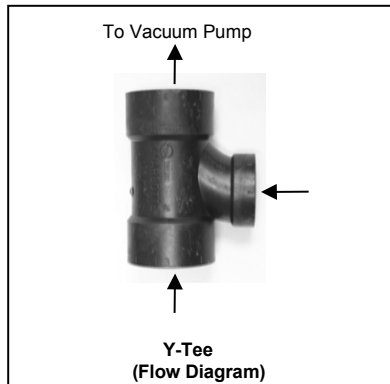
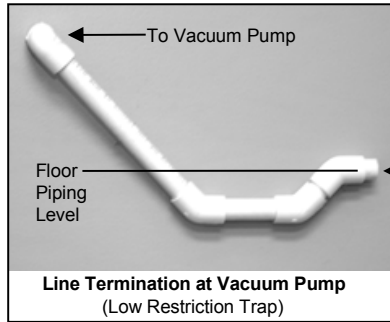
The design of the vacuum piping can have a large effect on the efficiency and reliability of a vacuum system. Experience has shown that the most effective vacuum piping designs are based on the air velocity that will occur in the lines. The velocity must be high enough to entrain all liquids and sediment in the air flow so that they do not accumulate in the lines. At the same time, the velocity must not be so high as to cause unacceptable vacuum losses. The **Vacuum Line Sizing Chart** on the following page is based on maintaining an optimum air flow velocity according to the criteria described above.



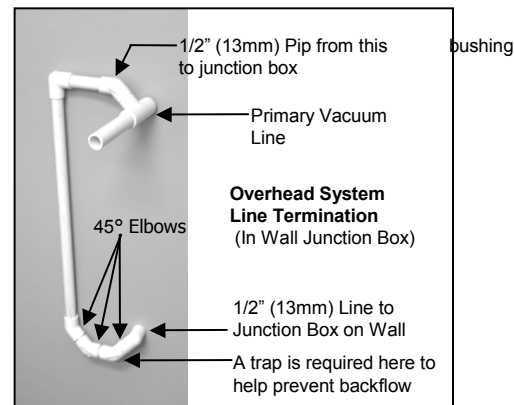
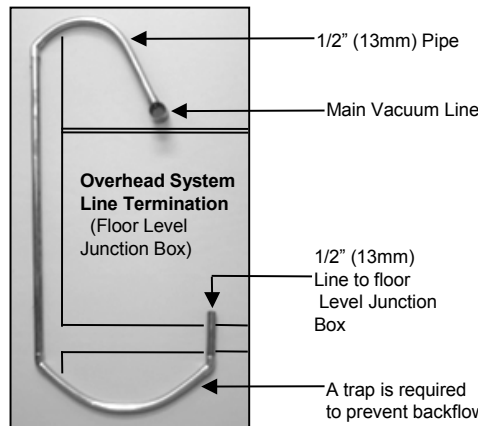
Installation & Operation Vacuum System

D. Vacuum Line Size Chart

# of Operatories Supplied through Line	Pipe Diameter in inches (mm)
1	3/4" (19)
2	1" (25)
3	1" (25)
4	1 1/4" (32)
5	1 1/4" (32)
6	1 1/2" (38)
7	1 1/2" (38)
8	1 1/2" (38)

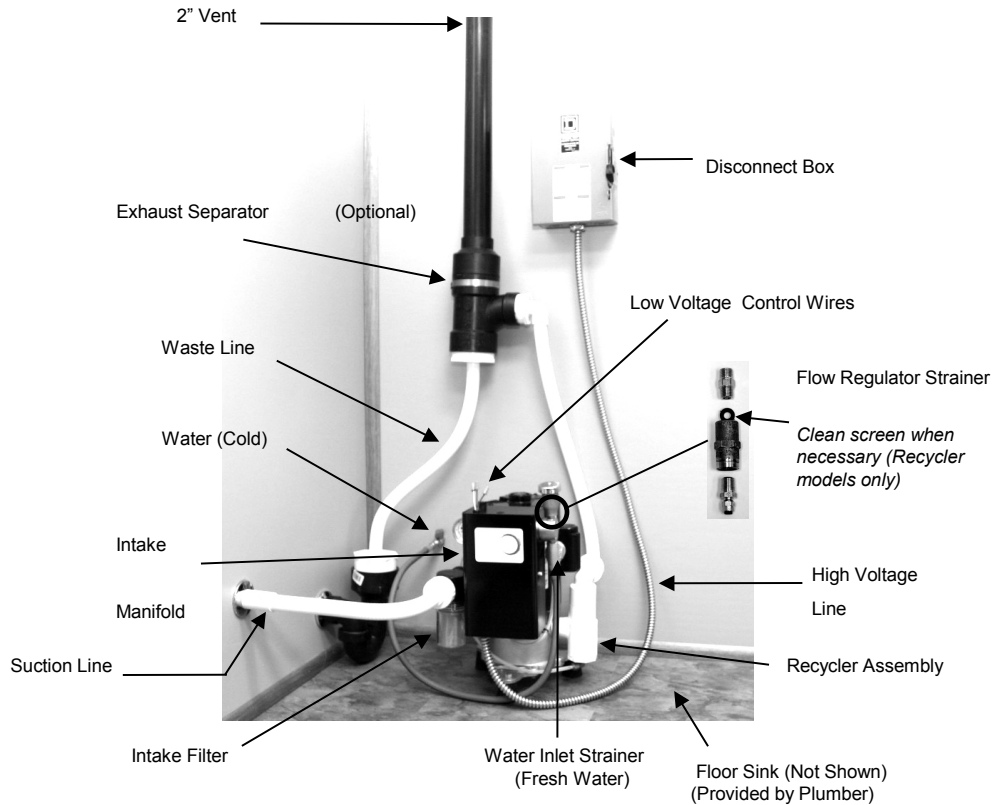


NOTE:
Use the number of operatories being supplied, not the number of outlets within the operatories to determine line size at any given point. Branch lines to individual operatories off of the main suction line should be 3/4 inch diameter



The vacuum lines should be supported to prevent sag and should be angled 1/4 inch (6 mm) for every 10 ft (3 m) towards the vacuum pump. It is of primary importance to minimize turns of 90 degrees in the system. This not only causes vacuum loss, but exposes areas where sediment can accumulate. A combination of two 45 degree elbows are recommended to a rather than a single 90 degree elbow. Restrictions in the line will also cause vacuum losses. Y-Tee should be used whenever possible.

Overhead systems require the use of the next larger size vacuum pump. Overhead systems also require a 1/2 inch (13 mm) line rather than 3/4 inch (19 mm) from the operatories to the main line, and special provisions to ensure that liquids do not travel back into the operatories. A sample vacuum piping diagram is shown. Consult JDS Technical Support for further information regarding vacuum line sizing.



E. Installing Vacuum System With Exhaust Separator

1. Place the vacuum unit on a solid level floor within two feet (0.6 m) of waste line P-trap or floor sink.
2. Mount the exhaust separator tank using sheetrock anchors and screws provided, at least 2 inch (51mm) above a P-trap waste connection, and within 3 feet (1 m) of the vacuum exhaust for proper 3 foot (1 m) exhaust hose connections.
3. Connect operatory vacuum line to the pump suction strainer using PVC pipe or the provided suction hose and glue with PVC type cement.
4. Attach the provided 3/4 inch (19 mm) pump exhaust hose to inlet fitting of the exhaust separator, and glue with PVC type cement.
5. Attach provided 3/4 inch (19 mm) drain hose to P-trap or floor sink from bottom drain fitting of exhaust separator and glue with PVC type cement.
6. Install 2 inch (51 mm) PVC vent line off the top of the exhaust separator and vent to the outdoors.
7. Connect the provided brass water manifold with shut-off valve to a 1/2 inch (13 mm) water supply line.
8. Connect high voltage electrical supply line to the pump as indicated in the electrical diagram.
9. For low voltage remote control, connect low voltage wires of corresponding color from the Apollo Master Control Panel vacuum switch.



F. Initial Start-Up

1. Check that water supply valve is "OPEN".
2. Start the pump.
3. Check exhaust tubing to ensure that water is flowing through the pumps.

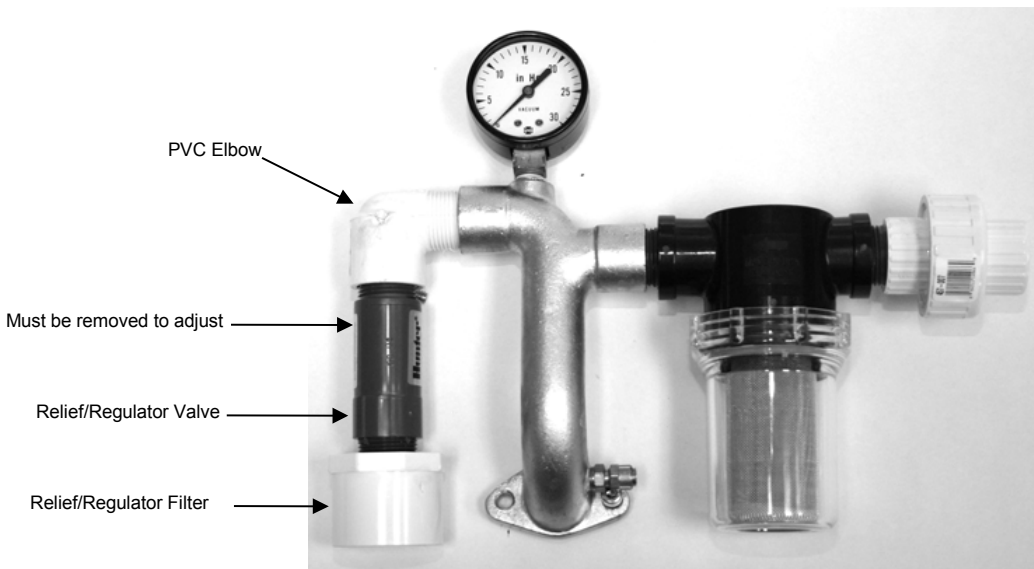
IMPORTANT: Do not run pump without full pressure water supply, or serious pump seal damage could result.

4. Check waste drain line to ensure that water is draining properly and that there are no water leaks.
5. Check vacuum gauge to ensure that the pump is functioning properly. Vacuum relief is factory preset for 10 inches Hg (34 KPa) Vacuum.
6. Store this installation manual for future reference.

G. Vacuum Level Adjustment

The Vacuum level is adjustable in the range of 8 to 13 inches Hg (27 to 44 KPa).

1. Remove filter and valve from the PVC elbow.
2. Using a 1/2 inch flathead screwdriver adjust the center mounted screw within the valve. Each full clockwise turn increases the vacuum level by approximately 2.5 inch Hg.



Notes

Circuit diagram, component part lists, descriptions, calibration, and further instructions and information available upon request. Contact JDS Dental Products for assistance.

Ambient temperature for transportation and storage must be within the range of 40 degrees Fahrenheit (4° C) minimum to 100 degrees Fahrenheit (38° C) maximum. Keep Dry

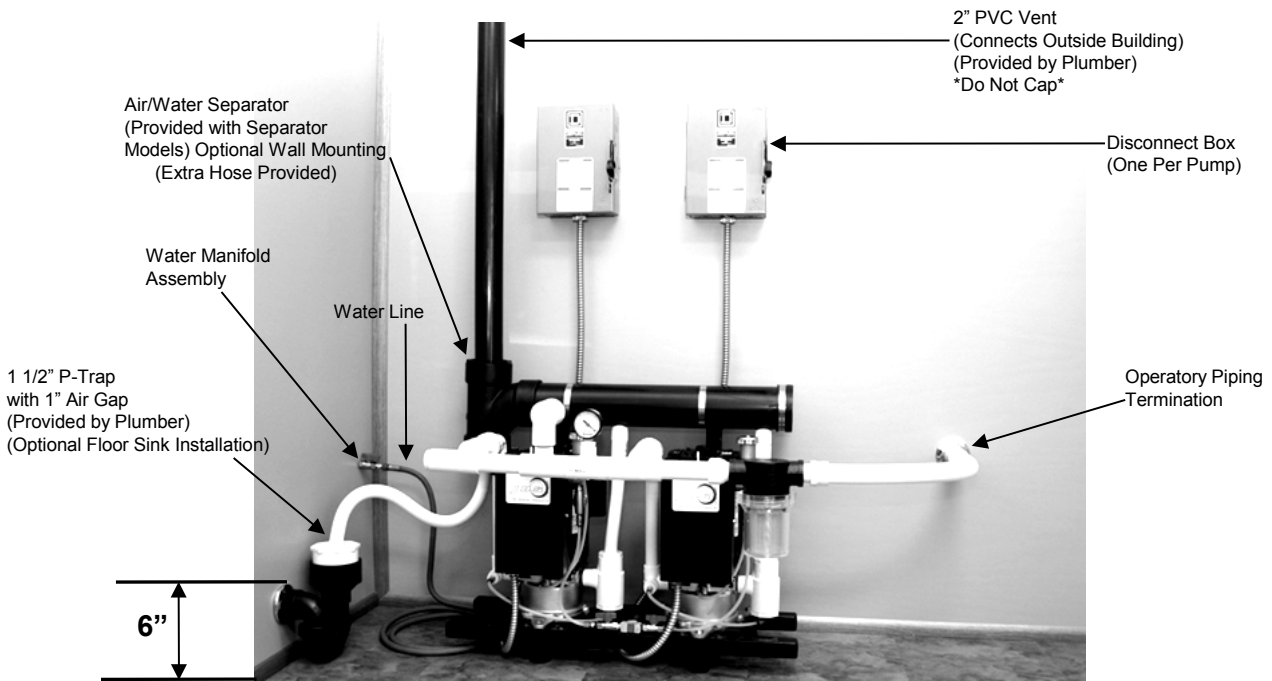
JDS Dental Products • 21205 Norwalk Blvd • Hawaiian Gardens, CA 90716
Technical Support: (562) 924 – 4300 • Fax: (562) 924-2273
Email: support@jdsfmfg.com • Web: www.jdsfmfg.com

ETL LISTED
CONFORMS TO
UL STD 60601-1
CERTIFIED TO
CAN/CSA
C22.2#601.1





Installation & Operation Vacuum System



E. Installing Vacuum System With Exhaust Separator

1. Place the vacuum unit on a solid level floor within two feet (0.6 m) of waste line P-trap or floor sink.
2. Connect operatory vacuum line to the pump suction strainer using PVC pipe or the provided suction hose and glue with PVC type cement.
3. Attach the provided 3/4 inch (19 mm) pump exhaust hose to inlet fitting of the exhaust separator, and glue with PVC cement.
4. Attach provided 3/4 inch (19 mm) drain hose to P-trap or floor sink from bottom drain fitting of exhaust separator and glue with PVC type cement.
5. Install 2 inch (51 mm) PVC vent line off the top of the exhaust separator and vent to the outdoors.
6. Connect the provided brass water manifold with shut-off valve to a 1/2 inch (13 mm) water supply line.
7. Connect high voltage electrical supply line to the pump as indicated in the electrical diagram.
8. For low voltage remote control, connect low voltage wires of corresponding color from the Apollo Master Control Panel vacuum switch.



Installation & Operation Vacuum System

F. Initial Start-Up

1. Check that water supply valve is "OPEN".
2. Start the pump.
3. Check exhaust tubing to ensure that water is flowing through the pumps.

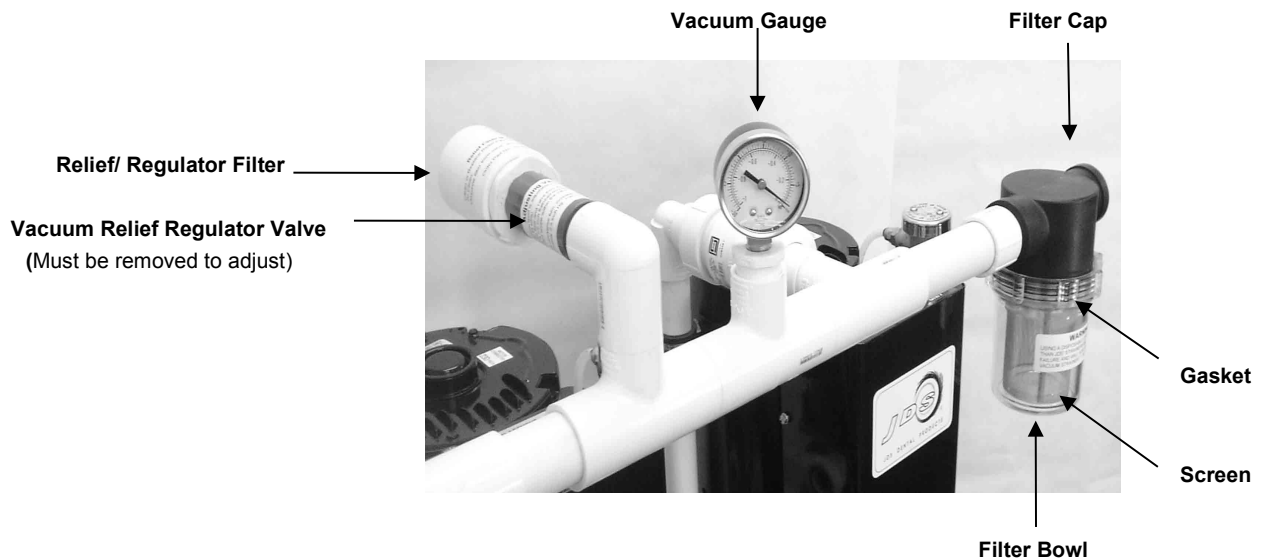
IMPORTANT: Do not run pump without full pressure water supply, or serious pump seal damage could result.

4. Check waste drain line to ensure that water is draining properly and that there are no water leaks.
5. Check vacuum gauge to ensure that the pump is functioning properly. Vacuum relief is factory preset for 10 inches Hg (34 KPa) Vacuum.
6. Store this installation manual for future reference.

G. Vacuum Level Adjustment

The Vacuum level is adjustable in the range of 8 to 13 inches Hg (27 to 44 KPa).

1. Remove filter and valve from the PVC elbow.
2. Using a 1/2 inch flathead screwdriver adjust the center mounted screw within the valve. Each full clockwise turn increases the vacuum level by approximately 2.5 inch Hg.



ETL LISTED
CONFORMS TO
UL STD 60601-1
CERTIFIED TO
CAN/CSA
C22.2#601.1



JDS Dental Products • 21205 Norwalk Blvd. • Hawaiian Gardens, CA 90716
Technical Support: 562-924-4300 • Fax: 562-924-2273
Email: support@jdsfmfg.com • Web: www.jdsfmfg.com